

JVC



MultiMediaNavigator

For Windows®

Picture Navigator

ENGLISH



INSTRUCTIONS

For Customer Use:

Enter below the Model No. and Serial No. Retain this information for future reference.

Model No. _____

Serial No. _____

LYT0585-004A

EN

MAJOR FEATURES	3
HOW THE DESKTOP WORKS	4 – 7
Bookshelf	4 – 5
Album View	6
Photo View	7
Camera View	7
CHANGING PICTURE NAVIGATOR SETTINGS	8 – 10
TRANSFERRING AN IMAGE FROM JVC VIDEO SOURCE UNIT TO PC (Cable)	11
TRANSFERRING AN IMAGE FROM A CAMERA TO PC (IrTran-P)	12 – 13
SAVING AN IMAGE ON YOUR HARD DRIVE	14
OPENING AN IMAGE STORED ON YOUR HARD DRIVE	15
Zooming in an image	15
CHANGING THE ALBUM'S FRONT COVER	16
Changing an album name	16
COPYING AN IMAGE TO ANOTHER ALBUM	17
Restoring an album	17
EDITING AND PROCESSING AN IMAGE USING ANOTHER APPLICATION	18
TRANSFERRING AN IMAGE FROM PC TO JVC VIDEO SOURCE UNIT (Cable)	19
TRANSFERRING AN IMAGE FROM PC TO JVC VIDEO SOURCE UNIT (IrTran-P)	20 – 21
NOTICE FOR USERS	22
INDEX	23

CAUTION:

- Operate this equipment according to the operating procedures described in this manual.
- Use only the provided CD-ROM. Never use any other CD-ROM to run this software.
- Do not attempt to modify this software.
- Changes or modifications not approved by JVC could void user's authority to operate the equipment.

How to handle a CD-ROM

- Take care not to soil or scratch the mirror surface (opposite to the printed surface). Do not write anything or put a sticker on either the front or back surface. If the CD-ROM gets dirty, gently wipe it with a soft cloth outward from the center hole using a circular motion.
- Do not use conventional disc cleaners or cleaning spray.
- Do not bend the CD-ROM or touch its mirror surface.
- Do not store your CD-ROM in a dusty, hot or humid environment. Keep it away from direct sunlight.

What is Picture Navigator Software ?

Picture Navigator software is a type of application program that allows you to transfer still images stored in a video source unit's built-in memory to a personal computer by connecting the video source unit to a PC.

What's more, you can also transfer images stored on your PC's hard drive back to the video source unit, or you can transfer a modified image to/from a video printer.

Advanced Applications

Capturing images

You can capture images from a video source unit and can also view them on the PC's monitor.

Saving an image

You can save an image onto your hard drive or a diskette.

Editing an image

There are a variety of album and image editing possibilities.

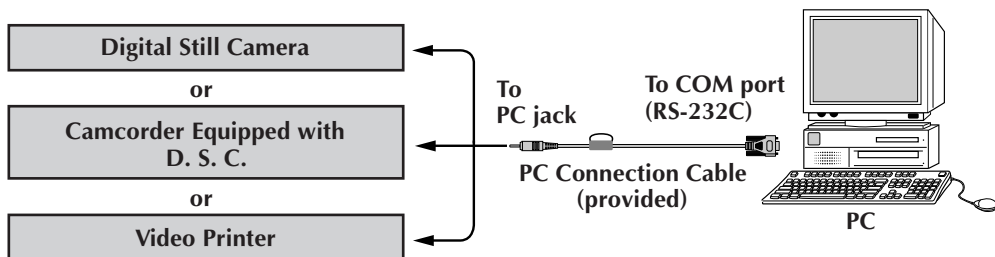
You can move the position of an image within an album, move an image to another album, and zoom images.

Transferring a modified image to a video source unit

You can transfer an image that has been modified using the provided software, Presto! Mr. Photo Gold, to a video source unit.

Connections

- Before connection, turn off the power on your PC and video source unit for safety.
- We recommend you should use the AC Power Adapter.



NOTE

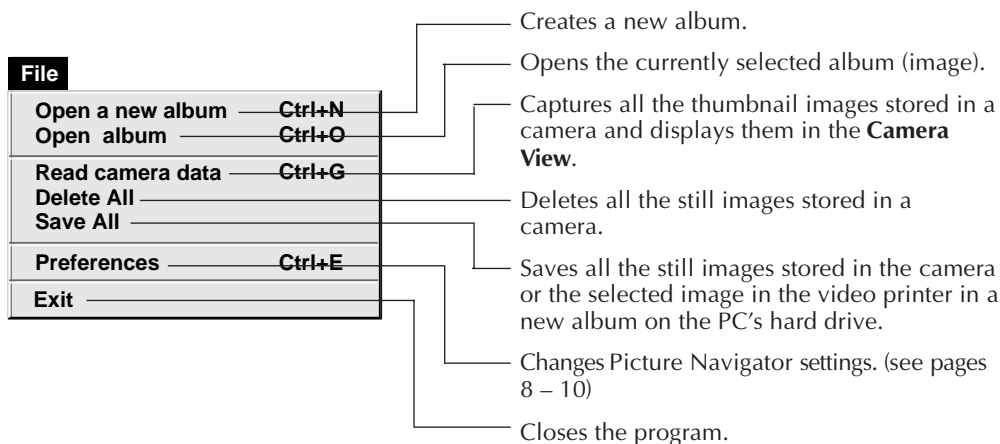
In this instruction manual, the term **video source unit** refers to all devices listed in "Connectable Devices" above (Digital Still Cameras, Camcorders equipped with a D.S.C. and Video Printers), and **camera** refers to Digital Still Cameras and Camcorders equipped with a D.S.C. only. Depending on the video device used, some operations may differ from those listed in the manual. For more information, refer to the instruction manual of the video device.

MENU BAR

All program functions can be selected from the menus in the menu bar. Click on any item in the menu bar to open the corresponding pulldown menu. Then click on the desired command in the pulldown menu. Some menu entries are invalid depending on the program status. Invalid commands appear lighter than valid commands.

Bookshelf

You can capture images from a connected device and create albums in this window.



Edit

Restore an album to the bookshelf	Ctrl+A
Delete the album(X)	Ctrl+X

Restores a deleted album.
(see page 17)

Deletes the selected album from the
Bookshelf.

Display

✓ Toolbar
✓ Status bar

Displays the toolbar.

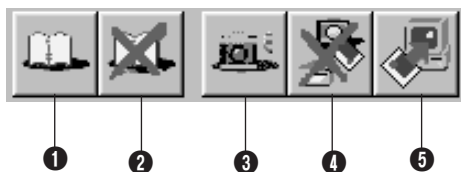
Displays the status bar.

Help

Version...

Displays information about the software version.

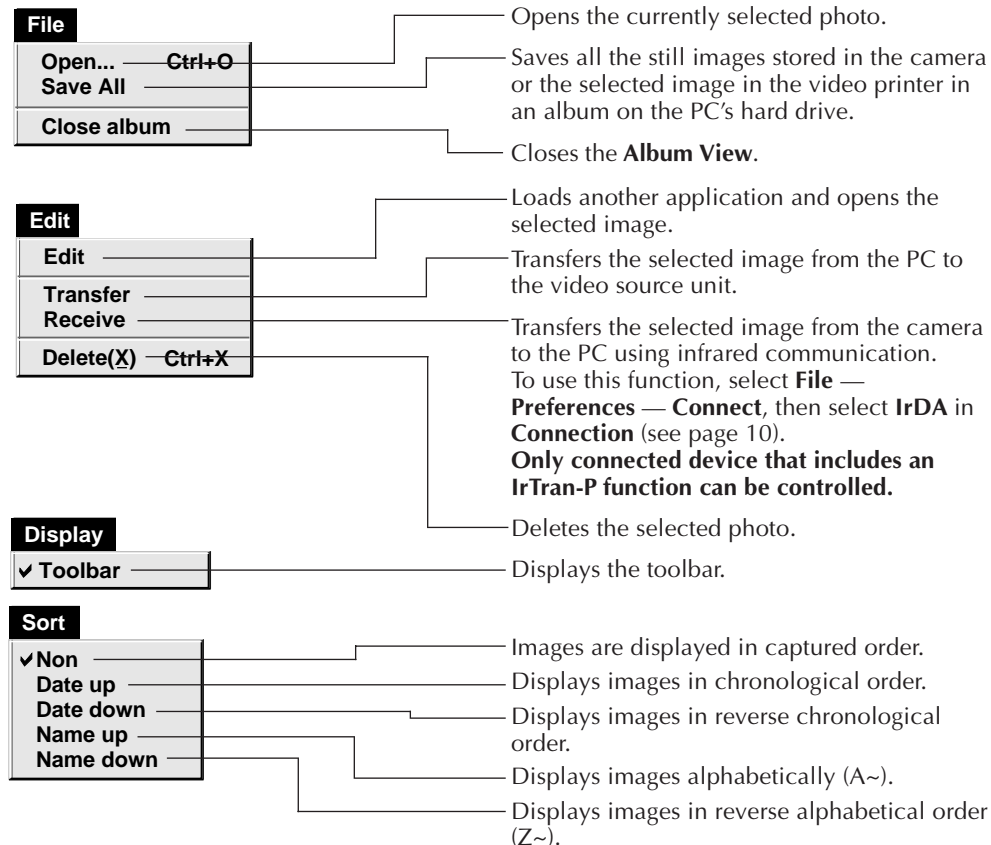
■ Bookshelf toolbar



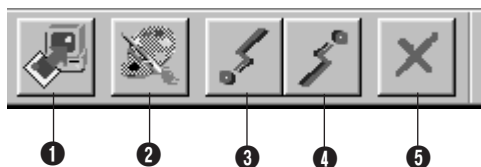
- ❶ Creates a new album.
- ❷ Deletes the selected album.
- ❸ Captures all the thumbnail images stored in a camera and displays them in the **Camera View.**
- ❹ Deletes all the still images stored in a camera.
- ❺ Saves all the still images stored in the camera or the selected image in the video printer in a new album on the PC's hard drive.

Album View

The thumbnails are displayed on the screen.



■ Album View toolbar

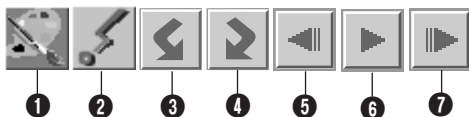


- ❶ Saves all the still images stored in the camera or the selected image in the video printer in an album on the PC's hard drive.
- ❷ Loads the picture editing software program and opens the selected image.
- ❸ Transfers the selected image from the PC to the video source unit.
- ❹ Transfers the selected image from the camera to the PC using infrared communication. To use this function, select **File — Preferences — Connect**, then select **IrDA in Connection**. (see page 10)
- ❺ Deletes the selected image.

Photo View

The selected image is displayed at full size.

■ Photo View toolbar



- ❶ Loads picture editing software program and opens the displayed image.
- ❷ Transfers the selected image from the PC to the video source unit.
- ❸ Rotates the image 90 degrees counterclockwise.
- ❹ Rotates the image 90 degrees clockwise.
- ❺ Displays the album's previous photo.
- ❻ Plays the slide show.
- ❼ Displays the album's next photo.

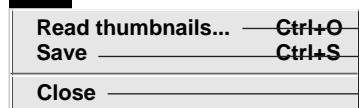
Camera View

CAUTION

The **Camera View** can only be used with JVC cameras.

You can view the images stored in the camera's built-in memory as thumbnails in this window.

File

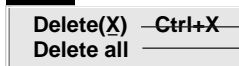


Transfers thumbnails of the camera's still images to the PC.

Saves onto disk the selected photo from the camera memory.

Closes the **Camera View**.

Edit



Deletes the selected photo from the camera memory.

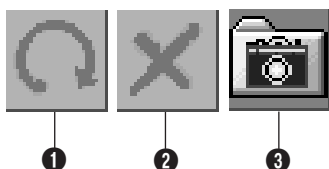
Deletes all the still images from the camera memory.

Display



Displays the toolbar.

■ Camera View toolbar



❶ Transfers thumbnails of the camera's still images to the PC.

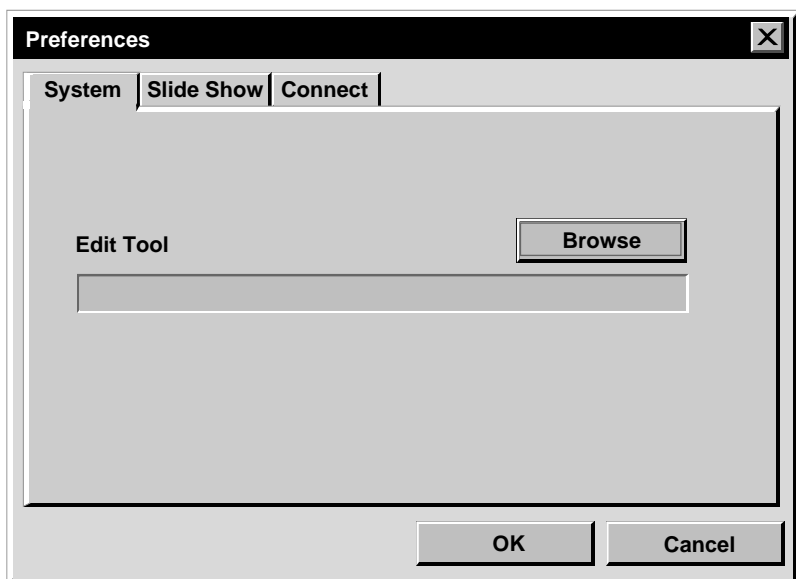
❷ Deletes the selected photo from the camera memory.

❸ Saves onto disk the selected photo from the camera memory.

Set the program preferences such as image display and serial port speed.
The menu display may change depending on your PC.

System

The following screen appears when you select **File — Preferences — System** in the **Bookshelf**.



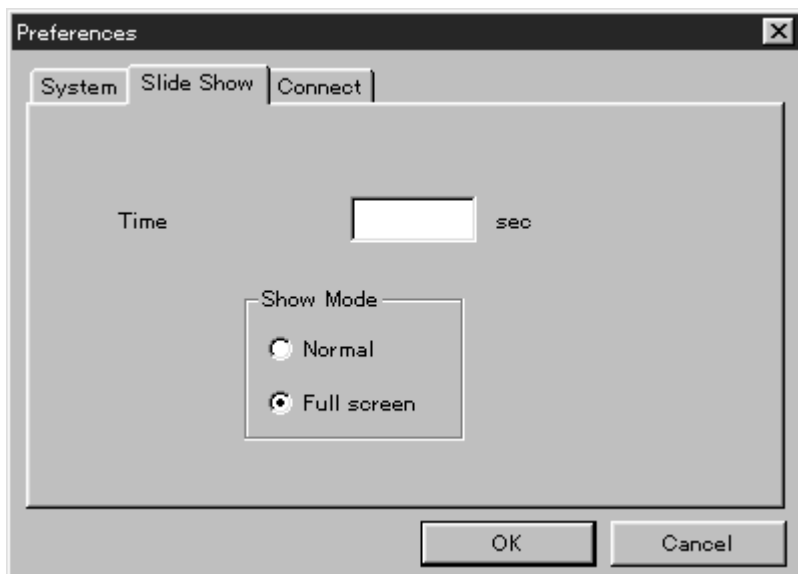
Edit Tool

Select the image processing software, such as one of the applications supplied with Presto! Mr. Photo Gold (provided), or another commercial paint application, to be used when processing the captured image.

Slide Show

The following screen appears when you select **File — Preferences — Slide Show** in the **Bookshelf**.

Click the **OK** button after changing the settings.



Time

Set the display time of the images for the Slide Show.

Show Mode

Normal : Images are displayed one after the other in the center of the screen.

Full screen : One full-sized image after another is displayed on the screen.

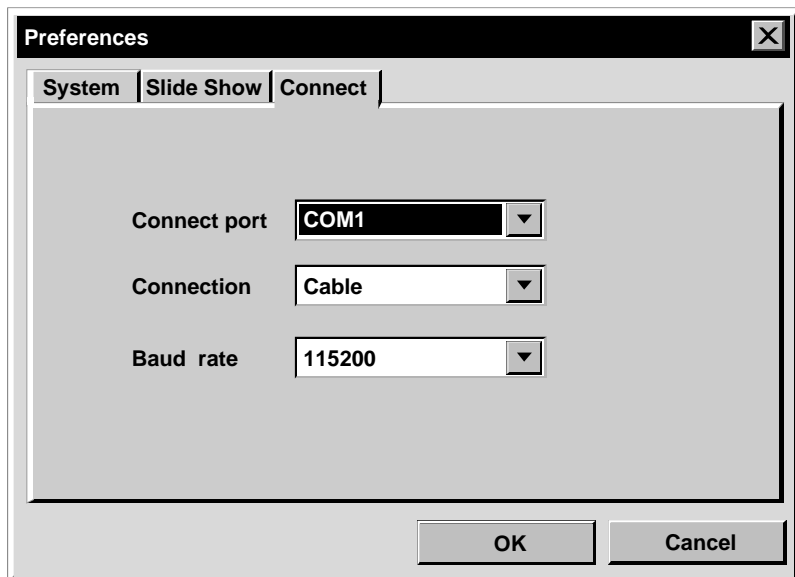
NOTE

If an image is larger than the window when **Full screen** is selected, the image may appear distorted. However, the image data itself won't be damaged. In this case, select the **Normal** mode.

Connect

The following screen appears when you select **File** — **Preferences** — **Connect** in the **Bookshelf**.

Click the **OK** button after changing the settings.



Connect port

Select the COM port connecting the PC to the video source unit.

Connection

Cable :Select **Cable** when the video source unit and the PC are connected using the PC connection cable.

IrDA :Select **IrDA** when transferring images between the camera and the PC, or from the PC to the video printer, using infrared communication.

Only connected device that includes an IrTran-P function can be controlled.

Baud Rate

The maximum speed is set up automatically depending on the PC you use.

Depending on your PC, certain serial speeds may not be selectable. If transmission errors occur during use, change to a lower serial speed setting. In this case, the rate of image transfer will be slower.

You can transfer an image from the video source unit to the PC using the provided PC Connection Cable.

Video source unit preparation

- 1 Set your video source unit so that you can transfer images to the PC using the cable.

When using a **camera**...

Set the camera to the **PLAY** or **PLAY/PC** position.

When using a **video printer**...

Set your video printer to the PC mode.

Display a stored image on the TV monitor.

File	
Open a new album	Ctrl+N
Open album	Ctrl+O
Read camera data	Ctrl+G
Delete All	
Save All	
Preferences	Ctrl+E
Exit	



Camera button

PC operation

- 2 Select **File** — **Preferences** — **Connect** in the **Bookshelf**.

- The **Connect** window appears.

- 3 Select **Cable** in **Connection**, then click **OK**.

- 4 When using a **camera**...
Select **File** — **Read camera data**, or click the **Camera** button in the **Bookshelf**.

- When the transfer is complete, thumbnail images captured into the **Camera View** will be displayed.
- These images are not saved onto the PC's hard drive at this time.

When using a **video printer**...

To create a new album, click the **Save All** button in the **Bookshelf**. To specify an album to store the image in, click the album's cover image in the **Bookshelf**, then click the **Save All** button in the **Album View**.

- The selected image in the video printer is saved onto the PC's hard drive.

12_{EN} TRANSFERRING AN IMAGE FROM A CAMERA TO PC (IrTran-P)

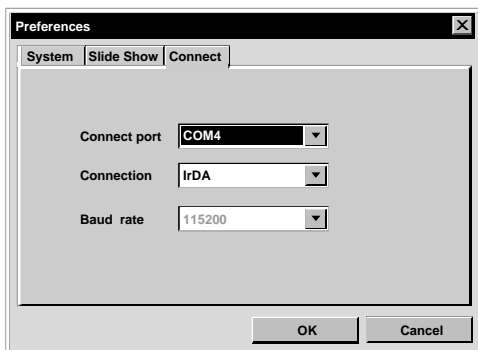
If the Windows® Infrared Communications Driver Ver. 2.0 is installed on your PC (if it is, the **Infrared** icon is available in your PC's control panel), you can transfer images from the camera to the PC using infrared communication.

Only connected device that includes an IrTran-P function can be controlled.

Video printers cannot be used with this function.

PC preparation

- 1 Start up Windows®.
- 2 Double-click on the **Infrared** icon in the control panel.
 - The **Infrared Monitor** dialog box appears.
- 3 Click **Options** and note the COM port listed in the message "**Providing application support on COM ☐ and LPT ☐**" which appears on-screen.
- 4 Start up **Picture Navigator**.
- 5 Select **File — Preferences — Connect** in the **Bookshelf**.
 - The **Connect** window appears.
- 6 Enter the COM port you saw in step 3 in **Connect port**.
- 7 Select **IrDA** in **Connection**, then click **OK**.
- 8 Double-click the album you wish to save in the **Bookshelf**.
 - The thumbnails are displayed on the screen.
- 9 Select **Edit — Receive** or click on the **Receive** button in the **Album View**.
 - The **Receive** dialog box appears.



Edit

Edit

Transfer

Receive

Delete(X) Ctrl+X



Receive button

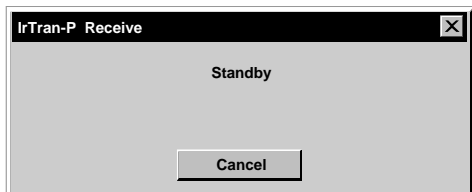
Camera operation

- 10** Set your camera to the **DSC PLAY** position, then set it for IrDA output.
- 11** Position the camera and the PC so that their infrared transmitter and receiver face each other.
 - The distance between them should be less than 1.6 ft. (50 cm), and the transmitter and receiver should be angled no more than 15° to each other.
 - Depending on the equipment used, infrared communication may not function properly if the distance between them is too great or too little.
- 12** Set the camera to transfer the desired image.

The camera starts transferring the image to the PC.
“*” blinks in the **IrTran-P Receive** dialog box during image transfer.
To transfer 2 or more images, repeat step 12.

PC operation

- 13** When you are finished transferring images, click **Cancel** in the **IrTran-P Receive** dialog box.



NOTE

Depending on your PC, the COM port you selected on page 12 may not work. If this happens, try another one.

JVC CAMERAS ONLY

Click the **Save All** button in the **Bookshelf**.

This creates a new album folder and saves all the images on your hard drive.



Save All button

- When you want to save only a certain image:
 1. Click on the image you want to save in the **Camera View** to highlight its lower left corner.
 2. Select **File — Save** in the **Camera View**. You can also click the **Save** button in the **Camera View**.
 3. Select the album in the **Select Stored Album** window.
 - The selected album is highlighted. Click **OK** to confirm.



Delete button

Save button

DELETING ALL THE STILL IMAGES STORED IN THE CAMERA

Select **Edit — Delete all** in the **Camera View**.

- When you want to delete only a certain image:
 1. Click on the image you want to delete in the **Camera View** to highlight its lower left corner.
 2. Select **Edit — Delete** in the **Camera View**. You can also click the **Delete** button in the **Camera View**.

WHEN YOU WANT TO DELETE AN ALBUM FROM YOUR HARD DRIVE

1. Move the mouse pointer to the album you want to delete in the **Bookshelf**, then click the right mouse button to select **Delete the album with directory**.
2. Click **OK** in the **Warning** dialog box.

CAUTION

- Beware that the image stored in the camera will also be deleted when you delete an image from the **Camera View**.
- Protected images in the camera cannot be deleted.
- Transfer is unavailable while the camera is displaying a thumbnail image screen or a menu screen. You can only transfer images being displayed by the camera at full size.

You can open an image that has been transferred from the video source unit and stored on your hard drive.



- 1 Double-click the album you want to view in the **Bookshelf**.
 - The thumbnails are displayed on the screen.
 - It may take a while to open the **Album View**, depending on the number and size of thumbnail images.

- 2 Double-click the image which you want to view at full size.
 - The selected image is displayed at full size.
 - Click the ► button in the **Photo View** to run through images in succession automatically (Slide Show). Click the left mouse button to stop the slide show.
 - Refer to page 9 to change the display time of the images.
 - Click the ► button in the **Photo View** to display the next full image.
 - Click the ◀ button in the **Photo View** to display the previous full image.



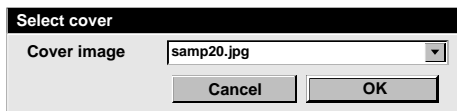
ZOOMING IN AN IMAGE

When the right mouse button is clicked on an image in the **Photo View**, the view size menu appears. Select the desired size.

The factory setting is 100%.

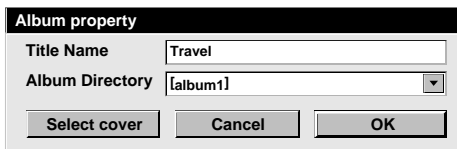
Note: An image that has been zoomed-in cannot be saved.

Each album's front cover in the **Bookshelf** is the first thumbnail image of the **Album View**. When you want to change an album's front cover, do the following.



- 1 Move the mouse pointer to the album whose front cover you want to change in the **Bookshelf**, then click the right mouse button.
- 2 Click **Album property**. The **Album property** dialog box appears.
- 3 Click **Select cover**. The **Select cover** dialog box appears.
- 4 Select the file name for the front cover you want from the **Cover image** list and click **OK**.
- 5 Click **OK** in the **Album property** dialog box. The album front cover in the **Bookshelf** is changed to the new front cover.

CHANGING AN ALBUM NAME



- 1 Move the mouse pointer to the album whose name you want to change in the **Bookshelf**, then click the right mouse button.
- 2 Click **Album property**. The **Album property** dialog box appears.
- 3 Enter an album name in **Title Name** and click **OK**. The album name is changed to the new one.
 - The characters below cannot be used in a file name.
\\, /, ", space.

You can copy an image among albums by displaying 2 or more albums.

1 First, open the **Album View** for the album you want to copy an image from, and then open another **Album View** for the album that you want to copy the image to.

- Move each window to a position that allows easy viewing, dragging and dropping.

2 Drag the image you want to copy and drop it into the album where you want to copy it.

NOTE

When a file is copied to an album that has a file with the same name but a different image, **Overwrite?** is displayed. Pressing **Yes** overwrites the image, but the overwritten image will not be displayed in the **Album View**. First close the **Album View**, then open it again. The overwritten image is now displayed.

RESTORING AN ALBUM

You can restore an album that was previously deleted if its album directory was not removed.

Edit

Restore an album to the bookshelf	Ctrl+A
Delete the album(X)	Ctrl+X

1 Select **Edit — Restore an album to the bookshelf** in the **Bookshelf**.

- The **Album property** dialog box appears.

2 Select the album you want to restore from the **Album Directory** list and click **OK**.

- The album is added to the **Bookshelf**.

NOTE

The image on the left may appear if images in the album were created with another paint application and saved in JPEG or Bitmap format.



You can select the image editor of your choice as the Picture Navigator's editor.

File	
Open a new album	Ctrl+N
Open album	Ctrl+O
Read camera data	Ctrl+G
Delete All	
Save All	
Preferences	Ctrl+E
Exit	

Edit	
Edit	
Transfer	
Receive	
Delete(X)	Ctrl+X



Edit button

Preparation

- 1 Select **File** — **Preferences** in the **Bookshelf**.
The **System** window appears.
- 2 Click on the **Browse** button.
- 3 Select the application software you wish to use. If you have already installed Presto! Mr. Photo Gold (provided), select one of the applications supplied with it. The name of the software is displayed in the Edit Tool row.
- 4 Click on the **OK** button.

Operation

- 5 Select the image you want to edit in the **Album View**.
Click on the image you want to edit in the **Album View** to highlight its lower left corner.
To select 2 or more images, move the mouse pointer to each image and click while pressing the Ctrl key.
- 6 Open the application. Select **Edit** — **Edit** or click on the **Edit** button in the **Album View**.

NOTE

Some applications may not work properly with Picture Navigator.

To connect the PC to a JVC video source unit, use the provided PC Connection Cable.

Video source unit preparation

1 Set your video source unit so that you can transfer images from the PC using the cable.

When using a **camera**...

Set the camera to the **PLAY** or **PLAY/PC** position.

When using a **video printer**...

Set your video printer to the PC mode.

PC preparation

2 Select **File — Preferences — Connect** in the **Bookshelf**.

- The **Connect** window appears.

3 Select **Cable** in **Connection**, then click **OK**.

4 Click on the image you want to transfer in the **Album View** to highlight its lower corner.

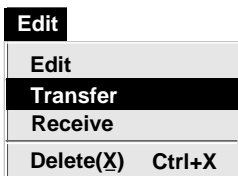
When using a **camera**...

To select 2 or more images, move the mouse pointer to each image and click while pressing the Ctrl key. Select all the images if you wish to transfer all the images to the camera.

When using a **video printer**...

Select one image to transfer.

5 Select **Edit — Transfer** or click on the **Transfer** button in the **Album View**. The selected image is transferred to the video source unit.



Transfer button

NOTES

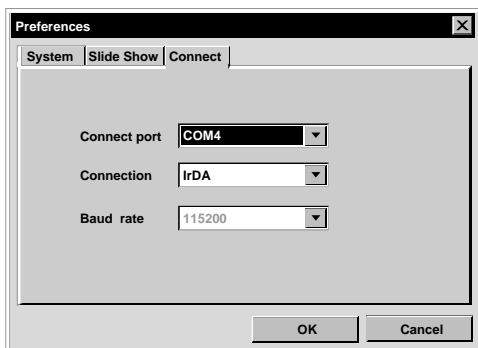
- Images that take up more than approx. 200 KB cannot be transferred.
- Image transfer is also unavailable if the camera memory becomes full and **Failure** is displayed while transferring images to it.
- The maximum number of pictures that can be transferred to the camera is limited by the size of the picture files.

If the Windows® Infrared Communications Driver Ver. 2.0 is installed on your PC (if it is, the **Infrared** icon is available in your PC's control panel), you can transfer images from the PC to the video source unit using infrared communication.

Only connected device that includes an IrTran-P function can be controlled.

PC preparation

- 1 Start up Windows®.
- 2 Double-click on the **Infrared** icon in the control panel.
 - The **Infrared Monitor** dialog box appears.
- 3 Click **Options** and note the COM port listed in the message "**Providing application support on COM ☐ and LPT ☐**" which appears on-screen.
- 4 Start up **Picture Navigator**.
- 5 Select **File — Preferences — Connect** in the **Bookshelf**.
 - The **Connect** window appears.
- 6 Enter the COM port you saw in step 3 in **Connect port**.
- 7 Select **IrDA** in **Connection**, then click **OK**.



Video source unit operation

8 Set your video source unit so that you can transfer images from the PC using infrared communication.

When using a **camera...**

Set the camera to the **DSC PLAY** position, then set it to accept IrDA input.

When using a **video printer...**

Set your video printer to accept IrDA input.

9 Position the video source unit and the PC so that their infrared transmitter and receiver face each other.

- The distance between them should be less than 1.6 ft. (50 cm), and the transmitter and receiver should be angled no more than 15° to each other.
- Depending on the equipment used, infrared communication may not function properly if the distance between them is too great or too little.

PC operation

10 Click on the image you want to transfer in the **Album View** to highlight its lower left corner.

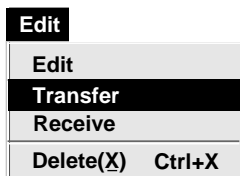
When using a **camera...**

To select 2 or more images, move the mouse pointer to each image and click while pressing the Ctrl key. Select all the images if you wish to transfer all the images to the camera.

When using a **video printer...**

Select one image to transfer.

11 Select **Edit — Transfer** or click on the **Transfer** button in the **Album View**. The selected image is transferred to the video source unit.



Transfer button

Use of this software is authorized according to the terms of the software license.

When contacting the nearest JVC office or agency in your country about this software (refer to the JVC Worldwide Service Network at <http://www.jvc-victor.co.jp/english/worldmap/index-e.html>), please fill out the following and have the appropriate information ready.


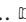
Product Name		
Model		
Problem		
Error Message		
PC	Manufacturer	
	Model	<input type="checkbox"/> Desktop <input type="checkbox"/> Laptop
	CPU	
	OS	
	Memory	MB
	Available Hard Disk Space	MB

Please note that it may take some time to respond to your questions, depending on their subject matter.
JVC cannot answer questions regarding basic operation of your PC, or questions regarding specifications or performance of the OS, other applications or drivers.



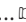

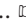



A

- Advanced applications  pg. 3
- Album View  pg. 6

B

- Baud rate  pg. 10
- Bookshelf  pg. 4


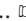
C

- Camera View  pg. 7
- Changing an album name  pg. 16
- Changing Picture Navigator settings  pg. 8
- Changing the album's front cover ...  pg. 16
- Connections  pg. 3
- Connect port  pg. 10
- Connect preferences  pg. 10
- Copying an image to another album  pg. 17

D

- Deleting all the still images stored in the camera  pg. 14



E

- Editing and processing an image using another application  pg. 18
- Edit Tool  pg. 8


H

- How the desktop works  pg. 4

M

- Major features  pg. 3
- Menu bar  pg. 4

O

- Opening an image stored on your hard drive  pg. 15


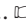
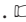
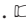
P

- Photo View  pg. 7


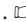
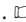
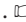
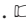




R

- Restoring an album  pg. 17

S

- Saving an image on your hard drive  pg. 14
- Show mode  pg. 9
- Slide show preferences  pg. 9
- System preferences  pg. 8


T

- Time  pg. 9
- Toolbar
 - Album View toolbar  pg. 6
 - Bookshelf toolbar  pg. 5
 - Camera View toolbar  pg. 7
 - Photo View toolbar  pg. 7
- Transferring an image from a camera to PC (IrTran-P)  pg. 12
- Transferring an image from JVC video source unit to PC (Cable)  pg. 11
- Transferring an image from PC to JVC video source unit (Cable)  pg. 19
- Transferring an image from PC to JVC video source unit (IrTran-P)  pg. 20

W

- What is Picture Navigator software?  pg. 3

Z

- Zooming in an image  pg. 15

EN

Picture Navigator

