



**MultiMediaNavigator**

# **CardNavigator (for Windows®) Video Player (for Windows®) JVC Video Decoder (for Macintosh®)**

**ENGLISH**



## **INSTRUCTIONS**

**For Customer Use:**

Enter below the Model No. and Serial No. which is located on the bottom of cabinet. Retain this information for future reference.

Model No. \_\_\_\_\_

Serial No. \_\_\_\_\_

LYT0585-003A

**EN**

**CardNavigator SECTION (for Windows®) ..... 3 – 11*****STARTING AND EXITING* ..... 4**

Starting the CardNavigator .....	4
Exiting the CardNavigator .....	4

***CONTROLS AND DISPLAYS* ..... 5*****CONNECTION SETTINGS* ..... 6**

JLIP Devices Settings .....	6
-----------------------------	---

***BASIC OPERATION* ..... 7**

Copying Files onto the PC .....	7
---------------------------------	---

***SUBSIDIARY SETTINGS* ..... 8 – 9**

Changing the JLIP ID Number .....	8
Changing the Transfer Rate .....	8
Refreshing the Display .....	9
Changing the Icon Display .....	9

***TROUBLESHOOTING* ..... 10 – 11****Video Player SECTION (for Windows®) ..... 13 – 16*****BASIC PLAYBACK* ..... 14 – 15**

Basic Playback .....	14
Easy Playback .....	15
Attaching Video Files to E-mail .....	16

**JVC Video Decoder SECTION (for Macintosh®) .... 17 – 22*****INSTALLATION* ..... 18 – 19**

Installing the JVC Video Decoder .....	18
Uninstalling the Software .....	19

***BASIC PLAYBACK* ..... 20 – 21**

Basic Playback .....	20
Easy Playback .....	21
Attaching Video Files to E-mail .....	22

# CardNavigator SECTION (for Windows®)

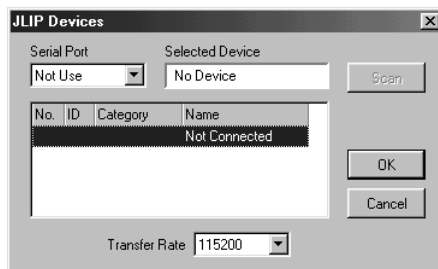
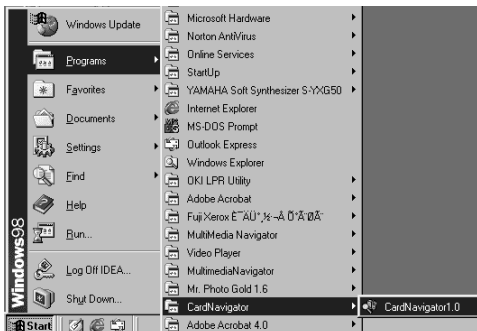
---

This section describes how to transfer files recorded on the memory card (MultiMediaCard) of the JVC digital video cameras to the PC.

You can find the latest information (in English) on the provided software program at our World Wide Web Server.  
<http://www.jvc-victor.co.jp/english/cyber>

## Starting the CardNavigator

- 1 On the taskbar, click “Start” — “Programs” and “CardNavigator”. Then select “Card Navigator 1.0”.

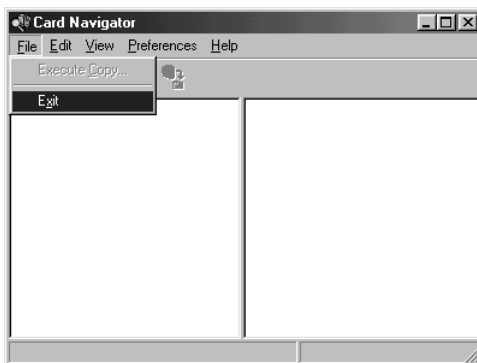


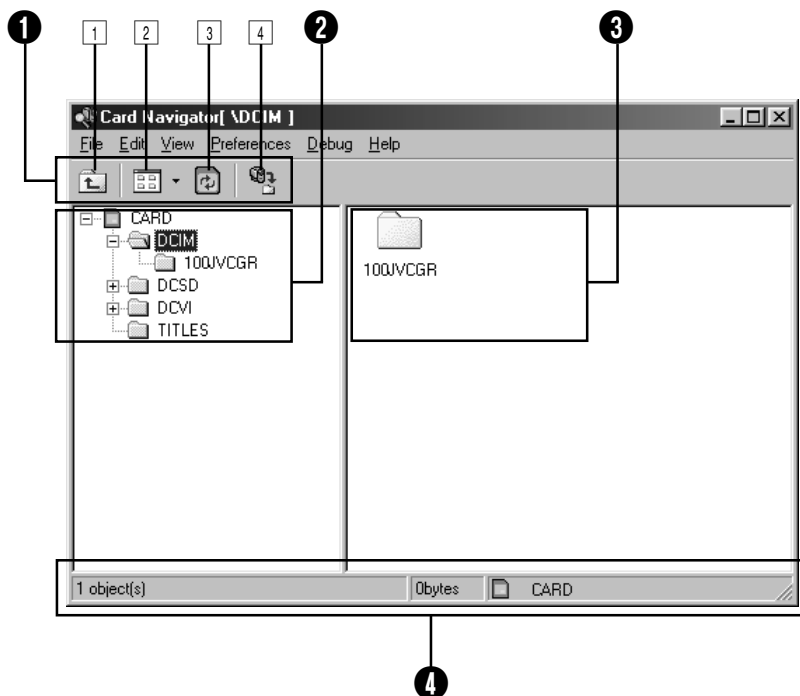
## Exiting the CardNavigator

- 1 On the “CardNavigator” window, select “File” — “Exit”.

### NOTES:

- Exit all other software applications before starting CardNavigator.
- Suspend the operation of any other software applications that periodically start at a given interval or time. (This includes screen savers, e-mail software, communications software, virus checkers, schedulers and so on.)
- Cancel network settings for any printers or folders on harddisks that are connected to or built into the PC and that are being shared over a network.
- With some notebook PCs, the default settings contain a setting which prevents the RS-232C connector from being used as the serial port or which does not supply power for power-saving purposes. In a case like this, follow the PC model's instructions, and select the setting (or change the BIOS) which will enable the RS-232C connector to be used as the serial port.
- Do not plug or unplug the PC connection cable or turn off power to video equipment while using CardNavigator as doing so may cause the PC to malfunction.





## 1 Toolbar

Press these buttons to operate the four most frequently used functions.

- Operations can also be performed from the pull-down menu.

### 1 Line Up button

Press this button to move to the folder (directory) above.

### 2 Views button

There are 4 icon display modes.

### 3 Refresh button

Press this button to update the latest information of the connected units, etc.

- This information can also be updated by selecting "Refresh" from the "View" menu.

### 4 Execute Copy... button

Click on this button to copy data on the memory card into the PC

- Data can also be copied by selecting "File" — "Execute Copy...".

## 2 Tree view display

Displays the folders (directories) which are stored on the memory card.

- Connect the JVC digital video camera to the PC.

## 3 List view display

Displays the files which are stored on the memory card.

- The display mode can be changed using the "View" menu.

## 4 Status bar

Displays the information such as the total size of the memory.

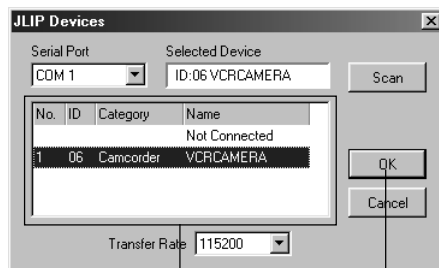
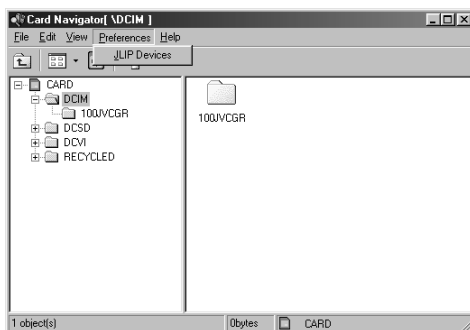
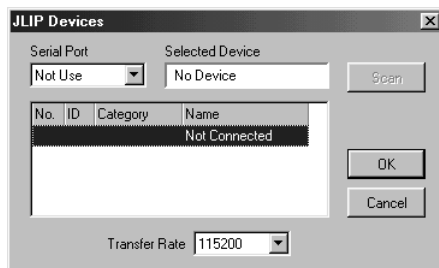
- The selected file or folder information is also displayed.

## JLIP Devices Setting

Once the CardNavigator program has been started, the JLIP unit connection must be set. Set the PC's COM port (connector where the RS-232C cable is connected) where the unit has been connected. This setting must be performed also when the unit connected has been changed.

### Preparations

- Insert the memory card (MultiMediaCard) into the digital video camera. Make sure in advance that the memory card contains data which you want to copy onto the PC.
- Connect the digital video camera and PC using the connecting cable, and turn on the power of the connected units.



List box

OK button

### 1 Start up "CardNavigator".

- The "JLIP Devices" window appears automatically when CardNavigator is first started up.
- To display the "JLIP Devices" window at any time during operation, select "Preferences" — "JLIP Devices".  
It can also be displayed by clicking on the update information button on the toolbar.

### 2 Select the serial port.

- Select the serial port where the unit has been connected, and click "Scan".
- Click on the digital video unit which is to be used from the list box.
- If the connected unit cannot be recognized properly, check whether the power of the digital video camera has been turned on.

### 3 Click the "OK" button.

## NOTES:

- The "JLIP Devices" window will appear when the digital video camera is no longer recognized during operation. Eliminate the cause of the problem, and then perform the connections and settings again.
- When internal modems, IrDA or other devices are used, it may not be possible to use one of the ports since these devices have already been assigned to the COM ports. Disable the modem or IrDA driver if no COM ports are free.
- It may not be possible to use the RS-232C connector depending on the USB or digital still camera driver being used.
- The BIOS may need to be set depending on the PC model in question.
- Another JLIP-compatible digital video camera can be selected but the CardNavigator program cannot be used with a digital video camera which does not have a file transfer function.

## Copying Files onto the PC

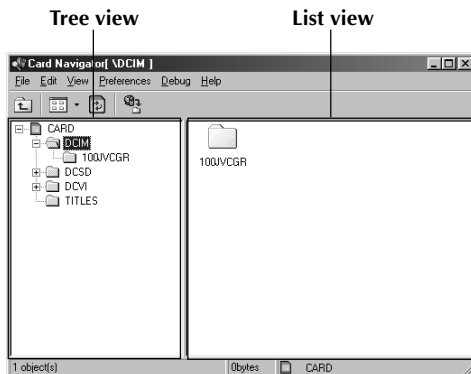
The files recorded on the memory card (MultiMediaCard) using the JVC digital video camera, etc. are copied into the PC.

### Preparations

- Insert the memory card (MultiMediaCard) into the digital video camera. Make sure in advance that the memory card contains data which you want to copy onto the PC.
- Connect the digital video camera and PC using the connecting cable, and turn on the power of the connected units.

### 1 Start up "CardNavigator".

- The data recorded on the memory card is displayed by Tree view.



### 2 Select a Folder.

- Click on the folder containing the file to be copied.
- The files in the folder are displayed by List view.

#### When selecting several consecutively listed files...

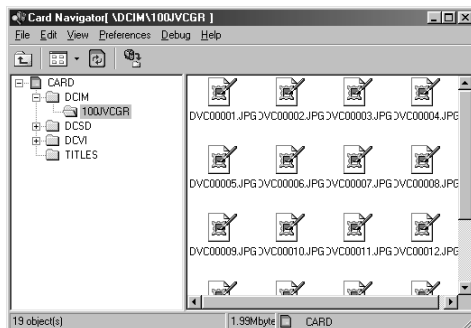
...While holding down the "Shift" button, left-click the first file and last file.

#### When selecting several files listed separately...

...While holding down the "Ctrl" button, left-click each of the files. A file is released from its selected status by left-clicking it again.

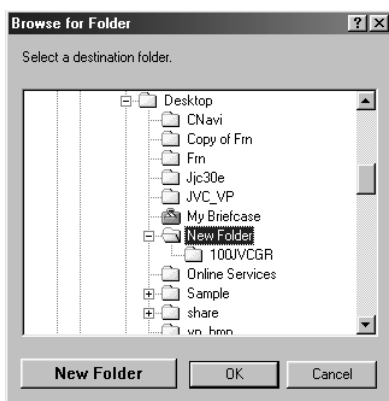
#### When releasing all the selected files...

...Left-click anywhere except the List view icon.



### 3 Select the copy destination.

- Click the "Copy" button on the toolbar. (Alternatively, select "File" — "Execute Copy...".)
- Select the copy destination on the folder selection dialog box, and then click the "OK" button.



## Changing the JLIP ID Number

The default ID number of the JVC digital video camera is 06. Changing the ID number is a convenient way of enabling more than one digital video camera to be used. Display the “JLIP Devices” window (see page 6), and make the change.

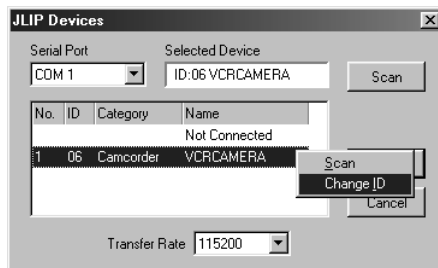
### 1 Right-click the unit whose ID number is to be changed on the “JLIP Devices” window.

- Select the “Change ID” menu item.

### 2 Use the keys on the keyboard to input the new ID number, and press the “Enter” key.

- Numbers outside the 1 to 99 range or any numbers used by other units cannot be used.

### 3 Click the “OK” button.



## Changing the Transfer Rate

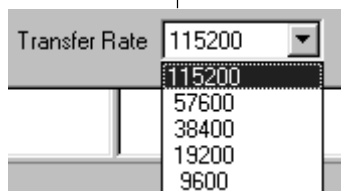
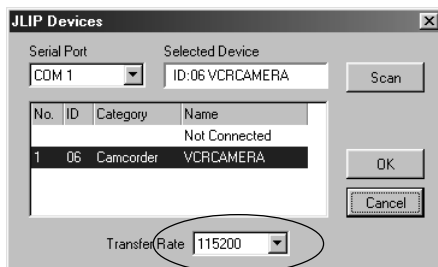
One of 5 rates can be selected for transferring the image data on the memory card (MultiMediaCard) to the PC. A communication error will occur unless the selected transfer rate matches the one set by the PC. Display the “JLIP Devices” window (see page 6), and change the rate.

### 1 Click the triangle mark for the transfer rate on the “JLIP Devices” window.

- The 5 transfer rates (115200, 57600, 38400, 19200 and 9600 bps) are displayed on the pull-down menu.
- Select a speed which is slower than the speed at which a communication error occurred.

### 2 Click the “OK” button.

- Check the PC model's transfer rate setting as well.





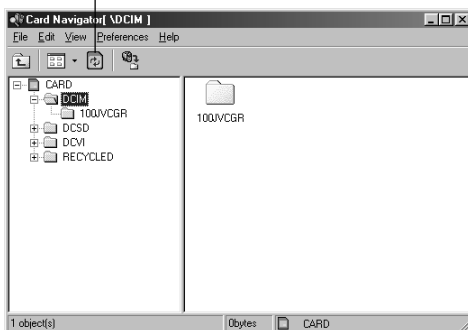
## Refreshing the Display

Update the display when the memory card (MultiMediaCard) in the JVC digital video camera has been replaced with another one or when files have been deleted on the digital video camera card.

### 1 Click the Update information button on the toolbar.

- Alternatively, select on the menu “View” — “Refresh”.
- The “Loading Information...” dialog box appears, and the display is updated to the latest data after the search has been completed.

### Refresh button



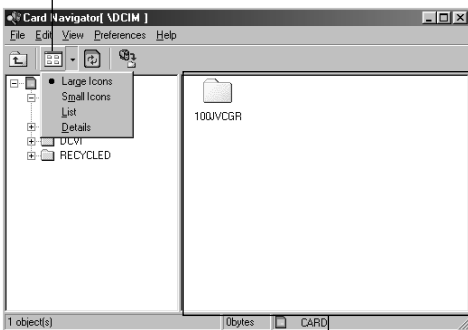
## Changing the Icon Display

The List view display can be changed to suit your preference. The setting will remain even when the program is started up the next time.

### 1 Click the Display icon button on the toolbar.

- The display can also be changed by making the selection from “View” on the menu.
- The files in the folder are displayed in List view. One of the following 4 icons can be selected.
  - Large Icons:** Icons consisting of 32 x 32 pixels and the filenames are displayed.
  - Small Icons:** Icons consisting of 16 x 16 pixels and the filenames are arranged in order from left to right and displayed.
  - List:** Icons consisting of 16 x 16 pixels and the filenames are arranged in order from top to bottom and displayed.
  - Details:** Icons consisting of 16 x 16 pixels as well as the filenames, file sizes and updated date/time are arranged in order from top to bottom and displayed.

### Line Up button



List view

SYMPTOM	CORRECTIVE ACTION	PAGES
Cannot select serial port.	<ul style="list-style-type: none"> <li>• Sometimes the RS-232 port cannot be used because the PC's COM ports have all been assigned to internal modem, IrDA or other devices. To check port usage, right click on "My Computer" on the desktop, select "Properties", click on the "Device Manager" tab on the "System Properties", and look under the item "Ports". If no ports are open, disable one of the modems, IrDA drivers or other devices to free up a COM port.</li> <li>• It may not be possible to use the RS-232C depending on the USB and digital still camera being used.</li> <li>• The BIOS may need to be set depending on the PC model in question.</li> </ul>	6 — —
JLIP device is not detected.	<ul style="list-style-type: none"> <li>• Check that the correct serial port number is set.</li> <li>• Check that the JLIP device is turned on.</li> <li>• Check that the correct connections for the JLIP device have been made.</li> <li>• Check that you have not mistaken the cable for the JLIP cable used for connections.</li> <li>• If two or more JLIP devices are used, check that the JLIP ID numbers being used do not conflict with each other.</li> <li>• Check using "Device Manager" that the serial port is in a usable state.</li> </ul>	6 — — 4 8 —
Communication error occurs.	<ul style="list-style-type: none"> <li>• Select a lower Transfer rate than the one which is currently set on the "JLIP Devices" window.</li> <li>• Exit any other applications which are running.</li> <li>• When the system's power management function is used, a reception error may occur depending on the PC model being used.</li> <li>• Right-click on "My Computer", and select "Properties". "System Properties" now appears. Click on the "Device Manager" tab, and among "System devices" display the "Advanced Power Management support" properties. Now proceed as follows. <b>(For Windows® 95)</b> Remove the check against "Support for Power Management support" under "Settings". If this item is not provided, exit the Properties display of the "Advanced Power Management support", click "Settings" — "Control Panel" — "Power", and under "Power Properties" remove the check against "Allow Windows to manage power use on this computer". <b>(For Windows® 98)</b> Set the check against "Disable in this hardware profile".</li> </ul>	8 — — —

SYMPTOM	CORRECTIVE ACTION	PAGES
<b>Communication error occurs.</b>	<ul style="list-style-type: none"> <li>● Another application sometimes periodically starts at a given interval or time while images are being captured.</li> <li>● Check whether another application which periodically starts at a given interval or time has been started or whether one has been set to be started. Some possible application candidates are listed below: Screen savers, schedulers, system agents, power management, virus checkers, Web browsers, e-mail software, shared services, etc.</li> <li>● In the case of notebook PCs, interruption handling may be caused by the function which displays/warns of the battery status. If a program for displaying/warning of the battery status has been started, either exit it or delete or move the icon from "Startup", and re-start.</li> </ul>	<p>—</p> <p>—</p> <p>—</p>
<b>Cannot copy files.</b>	<ul style="list-style-type: none"> <li>● Check the amount of free memory on the drive with the copy destination folder.</li> <li>● Check whether the drive with the copy destination folder is "write-protected."</li> <li>● Check whether the copy destination folder has a file with the same name.</li> <li>● Files cannot be transferred to the digital video camera's memory.</li> </ul>	<p>7</p> <p>7</p> <p>7</p> <p>7</p>

**The CD-ROM contains digital sound files (data saved on the accessory MultiMediaCard at the factory). When the MultiMediaCard has been formatted, follow the steps below to save the files on the MultiMediaCard.**

1. Use the optional PC card adapter or flash path to make the MultiMediaCard recognizable to the PC.
2. Copy the "DCSD" folder on the CD-ROM into the root directory (volume) of the MultiMediaCard.

[illegible]

# Video Player

## SECTION (for Windows®)

---

This section describes how to play back video files.

You can find the latest information (in English) on the provided software program at our World Wide Web Server.

<http://www.jvc-victor.co.jp/english/cyber>

### Operating Environment

1. Microsoft® Windows® 95/Windows® 98
2. CPU: Intel® Pentium® 200 MHz class or higher
3. Minimum RAM requirement: 32 MB
4. Minimum hard disk space requirement: 1 MB
5. Display capability of 65,536 colors or more
6. CD-ROM drive

\* The system requirements information is not a guarantee that provided software applications will work on all personal computers meeting those requirements.

\* Microsoft®, Windows® are either registered trademarks or trademarks of Microsoft corporation in United States and/or other countries.

\* Intel®, Pentium® are registered trademarks of Intel corporation.

\* Other trademarks are property of their respective owners.

\* If you use Windows® 95 or a personal computer which does not have a COM port, use an optional flash path, conversion card adapter, etc. For details on the operating environment of these devices, contact the dealers or manufacturers.

## Basic Playback

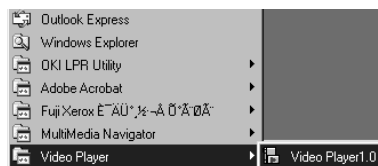
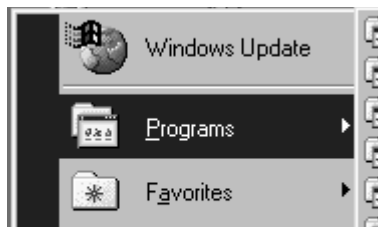
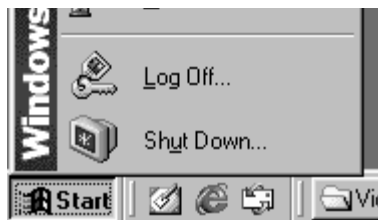
There are several different methods for playing back a video on the Video Player, depending on how you load the file.

### Preparation

Start Windows® 98.

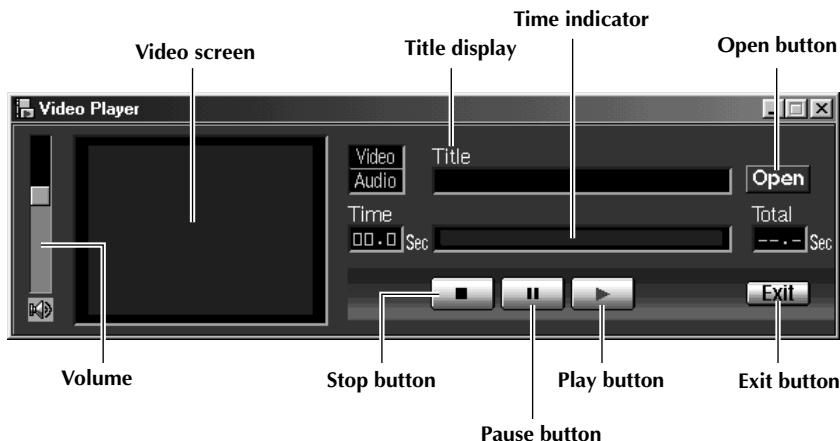
- Send the video file that you want to play back to the computer. (pg. 7)

- 1 Click the **"Start"** button.
  - The Start Menu bar appears.
- 2 Point the cursor to **"Program"**.
- 3 Point the cursor to **"Video Player"**.
- 4 Click the **"Video Player"**.
  - The Video Player window opens.
- 5 Click the **"Open"** button, then select the video file.
  - Select the file with the extension **".jmm"**.
- 6 Click the **"▶"** button.
  - Playback of the video starts.



### NOTE:

- When the volume setting is changed, the PC's volume setting will also be changed. It is recommended that the Video Player be returned to the pre-startup volume level when the volume setting has been changed.



## Easy Playback

You can start playback easily by double clicking on the icon of a video file.

### Preparation

Start Windows® 98.

- Send the video file that you want to play back to the computer. (pg. 7)

### 1 Double clicking on the icon of a video file.

- Select the file with the extension “.jmm”.



### 2 Playback starts automatically.

- To stop playback, click the “■” button, and to pause, click the “||” button.

### 3 When the playback finishes, click the “Exit” button.

- The Video Player window closes.



## Attaching Video Files to E-mail

Video files that have been created using a digital video camera can be attached to e-mail and sent. A dedicated software program is required in order for these video files to be played. While taking the steps outlined below, send the required software to the receiving end when sending a video file for the first time.

### Transmitting end:

- 1** Attach and send the “JVC\_VP.exe” file in the “For Win” folder on the CD-ROM.

### Receiving end:

- 1** Save the attached file on the hard disk.
- 2** Designate the folder in which the file is to be saved since self-decompression will start once the icon of the saved JVC\_VP.exe file is double-clicked.
- 3** Upon completion of the self-decompression, Video Player starts up. For the next and all subsequent startups, double-click on the icon of “VPLAY WIN.exe” in the folder in which the file was saved.

## NOTES:

- When a file is to be attached to e-mail, it must be encoded in a format which will allow it to be decoded by the e-mail software program at the receiving end. (Encoding formats in general use include BINHEX, UUENCODE and BASE 64.) Attach and send the file after checking whether the file can be decoded at the receiving end. If neither the decoding format at the receiving end nor the method to change the encoding format at the sending end is known, the file should not be attached since trouble will likely occur.
- Do not attach video files to a mailing list.
- Attach just one file per e-mail in order to keep down the overall size of the e-mail.
- For details on the procedures for attaching files to e-mail and separating attached files from e-mail, refer to the instructions on how to use the e-mail software program.
- Users with a home page can, alternatively, upload the files of a play software program to the World Wide Web server.



# JVC Video Decoder SECTION (for Macintosh®)

---

This section describes how to play back video files.

You can find the latest information (in English) on the provided software program at our World Wide Web Server.  
<http://www.jvc-victor.co.jp/english/cyber>

## Operating Environment

### JVC Video Decoder

1. Power PC 603e/120 MHz or faster
2. Mac OS 7.6.1 or later
3. QuickTime 3.0 or later
4. Minimum RAM requirement: 32 MB
5. Minimum hard disk space requirement: 1 MB

\* Macintosh® is a registered trademark of Apple Computer.

\* Stuffit Expander® is a registered trademark of Aladdin Systems, Inc. of the United States.

\* Other trademarks are property of their respective owners.

\* If you use Macintosh® which does not have a COM, use an optional flash path, conversion card adapter, etc. For details on the operating environment of these devices, contact the dealers or manufacturers.

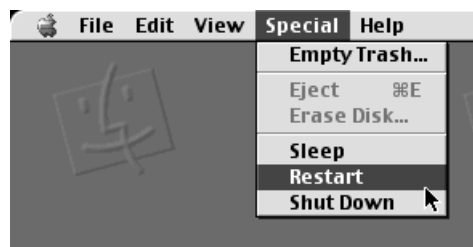
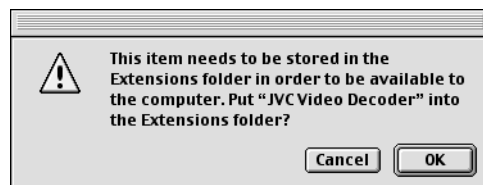
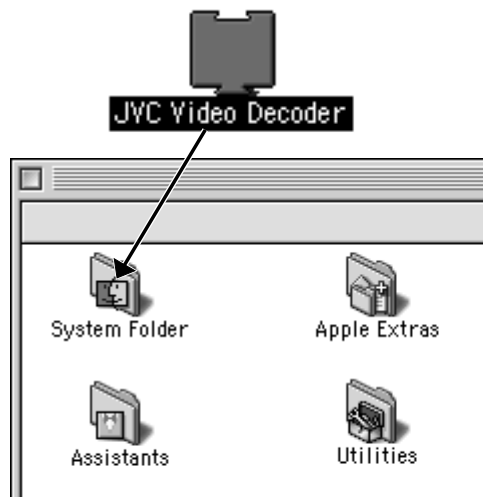
## Installing the JVC Video Decoder

For details on the basic operation of Mac OS, refer to the instruction manual provided with your Macintosh® or Mac OS.

### Preparation

Start Macintosh®.

- If you are running other software, close that software.



## Uninstalling the Software

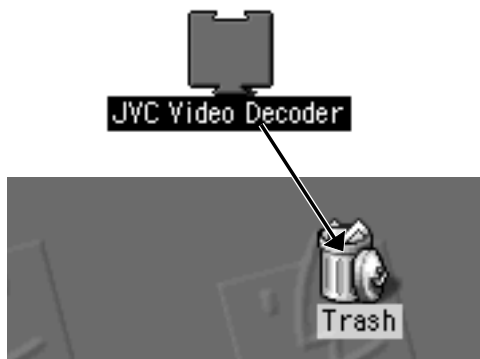
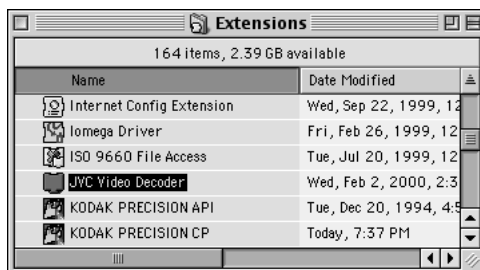
When you don't need to use the JVC Video Decoder, uninstall the program.

### Preparation

Start Macintosh®.

- If you are running other software, close that software.

- 1 Double click the “System Folder” icon.**
  - The System Folder opens.
- 2 Double click the “Extensions” folder icon.**
  - The Extensions folder opens.
- 3 Drag the “JVC Video Decoder” icon to “Trash”, then drop the icon there.**
  - If you want to delete the file completely, empty the trash.



## Basic Playback

There are several different methods for playing back a video on the QuickTime Player (or Movie Player), depending on how you load the file.

### Preparation

Start Macintosh®.

- Make sure that you installed the JVC Video Decoder in advance. (pg. 18)



#### 1 Double click on the "QuickTime Player" icon.

- The QuickTime Player is normally provided with Macintosh®.

#### 2 Select "Open Movie" from the "File" menu.

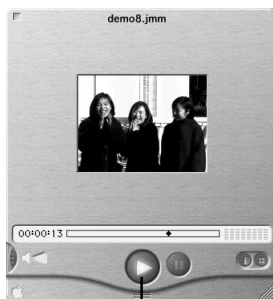
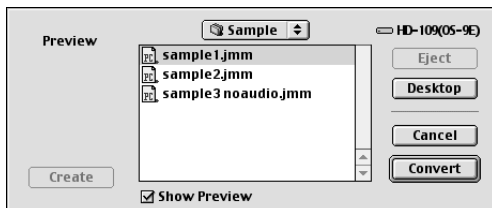
#### 3 Select the video file in the dialog box.

- Select the file with the extension ".jmm".

#### 4 Click the "Convert" button.

#### 5 Click the "►" button.

- Playback of the video starts.
- For details on the basic operation of QuickTime Player (or Movie Player), refer to the instruction manual provided with your Macintosh® or visit the website of Apple Computer.



Play button

## Easy Playback

You can start playback easily by double clicking on the icon of a video file.

### Preparation

Start Macintosh®.

- Make sure that you installed the JVC Video Decoder in advance. (☞ pg. 18)

### 1 Double clicking on the icon of a video file.

- Select the file with the extension “.jmm”.

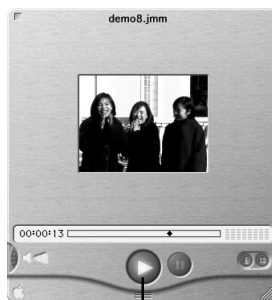
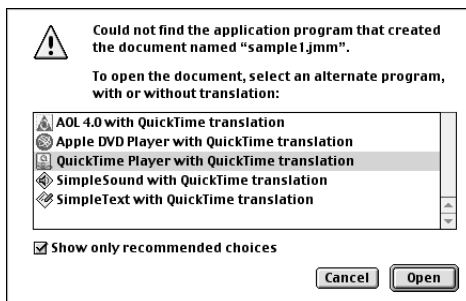
### 2 Select the “QuickTime Player” in the dialog box, then click the “Open” button.

### 3 Click the “▶” button.

- Playback of the video starts.
- For details on the basic operation of QuickTime Player (or Movie Player), refer to the instruction manual provided with your Macintosh® or visit the website of Apple Computer.

## NOTE:

- Do not use PC Exchange to register “jmm” files. In some cases it is not possible to play back a “jmm” file that was copied from a DOS-formatted floppy disk.



Play button

## Attaching Video Files to E-mail

Video files that have been created using a digital video camera can be attached to e-mail and sent. A dedicated software program is required in order for these video files to be played. While taking the steps outlined below, send the required software to the receiving end when sending a video file for the first time.

### Transmitting end:

- 1 Attach and send the "JVC\_VD.cpt" file in the "For Mac" folder on the CD-ROM.

### Receiving end:

- 1 Save the attached file on the hard disk.
- 2 Decompress the file using Stuffit Expander®, etc.
- 3 Move the "JVC Video Decoder" in the "JVC Video Decoder" folder which was created by the decompression to the extended function folder.
- 4 "JVC Video Decoder" must be restarted if it is to be used straight away.

## NOTES:

- For further details, refer to "Readme" attached to "JVC Video Decoder."
- When a file is to be attached to e-mail, it must be encoded in a format which will allow it to be decoded by the e-mail software program at the receiving end. (Encoding formats in general use include BINHEX, UUENCODE and BASE 64.) Attach and send the file after checking whether the file can be decoded at the receiving end. If neither the decoding format at the receiving end nor the method to change the encoding format at the sending end is known, the file should not be attached since trouble will likely occur.
- Do not attach video files to a mailing list.
- Attach just one file per e-mail in order to keep down the overall size of the e-mail.
- For details on the procedures for attaching files to e-mail and separating attached files from e-mail, refer to the instructions on how to use the e-mail software program.
- Users with a home page can, alternatively, upload the files of a play software program to the World Wide Web server.

## This image shows a full page of blank, lined paper. It features approximately 20 evenly spaced horizontal grey lines across its entire width, providing a guide for handwriting or typing. The paper itself is a clean, off-white color.

**EN**

**MultiMediaNavigator**

**JVC**

VICTOR COMPANY OF JAPAN, LIMITED